

# Andrej Bagar Theatre

## MAIN STAGE

- i** Important note:  
When printing this document, please, uncheck the option *Fit to page* in the Adobe Acrobat's printing menu ( *File > Print...* ) in order not to distort the graphics and the measure of plans. You may experience image cropping due to printer's limited printing range, yet the unprinted parts should contain no relevant data. If so, consider using a different printer with larger printing range.

**DIVADLO**

**ANDREJA  
BAGARA  
V NITRE**

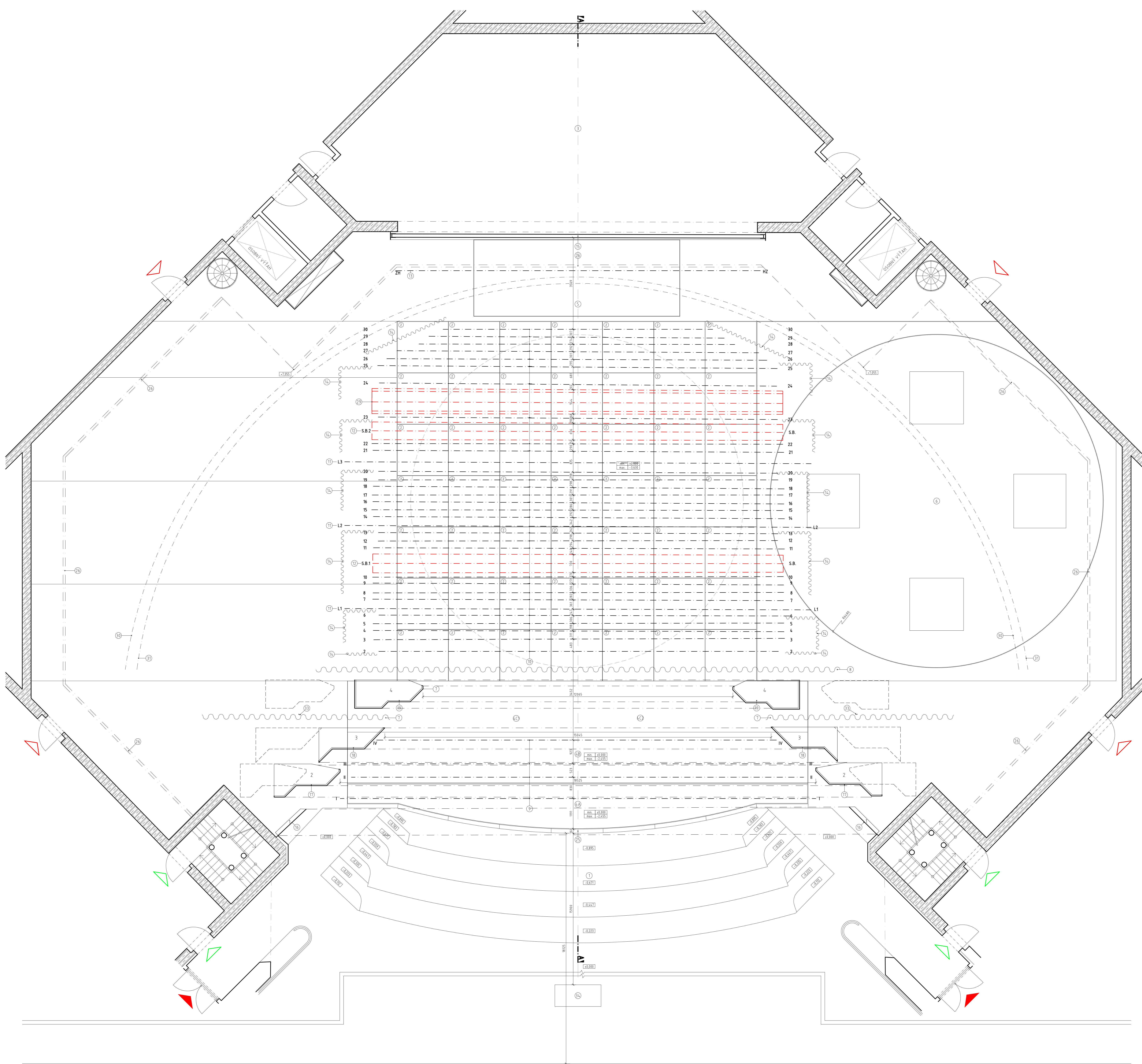
**Ján Surovka**

Manažér výpravy umeleckej tvorby

**Divadlo Andreja Bagara v Nitre**

Svätoplukovo nám. č. 4  
950 53 Nitra

**tel.:** + 421 (0) 37 7764 762  
+ 421 (0) 37 7410 891  
**fax.:** + 421 (0) 37 7410 891  
**mobil:** + 421 (0) 903 401 311  
**e-mail:** [jan.surovka@dab.sk](mailto:jan.surovka@dab.sk)

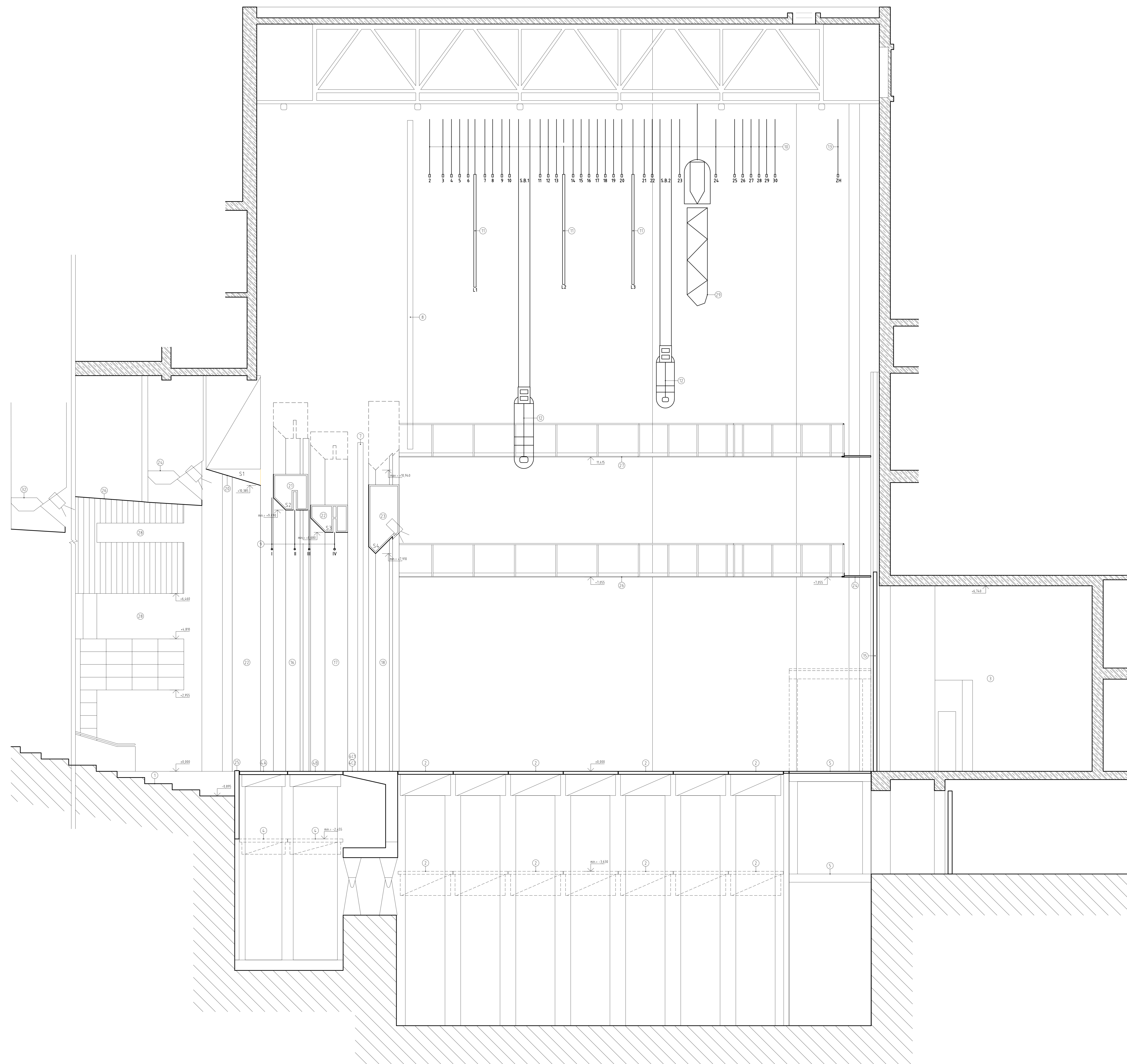


## LEGENDA

- ▲ VSTUP DO HĚDISKA
- △ VSTUP NA JAVISKO
- ▲ VSTUP DO LŮŽE
- ① HĚDISKO (NEZAMĚRANÉ)
- ② D/DP STOLY HLAVNĚHO JAVISKA, MAX. ±0,000, MIN. ± -3,630
- ③ SKLAD DEKORACÍ
- ④
- ⑤
- ⑥ ORCHESTRISKO, MAX. ±0,000, MIN. ± -2,455
- ⑦
- ⑧ VÝTAH DEKORACÍ
- ⑨ KAZETA TOČNÉ 14x14m - TOČNA Ø12,96m
- ⑩ NOŽNICOVÁ OPONA (ČERVENÁ)
- ⑪ SLÁVNOSTNÁ OPONA - PROSPEKTOVÝ TAH 1 (GOBELÍN)
- ⑫ PROSPEKTOVÝ TAH I-IV, Ø55mm III TAH SA NEPOUŽÍVA - ZAVEŠENÉ REPRODUKTORY
- ⑬ PROSPEKTOVÝ TAH 2-30 12, 11, 22, - MOŽNOST TELESKOPICKÉHO ROZŠÍŘENÍ - PREREZ JOKLA 60x100 mm
- ⑭ L1, L2, L3 VÝKRYTÝ ŠTRBINOVÝ STROPU (VÝŠKA 4,000mm)
- ⑮ SVETELNÁ BATÉRIA 1-2, IROZMERY, VxŠ 1-2960x690mm, 2- 2265x625mm
- ⑯ ZADNÝ HORIZONT
- ⑰ ŠALY
- ⑱ ŽELEZNÁ OPONA
- ⑲ PORTÁLOVÁ VEŽA 1 (ľavá, pravá) - RUČNÝ PŮHON
- ⑳ PORTÁLOVÁ VEŽA 2 (ľavá, pravá), MN = 18525mm, MAX = 21160mm
- ㉑ PORTÁLOVÁ VEŽA 3 (ľavá, pravá), MN = 15045mm, MAX = 19960mm
- ㉒ PORTÁLOVÁ VEŽA 4 (ľavá, pravá), MN = 12065mm, MAX = 19000mm
- ㉓ PORTÁLOVÁ LAMELA S1, VÝŠKA 10385mm, (FIXNÁ POLOHA)
- ㉔ KONTRAPORTÁL S2, VÝŠKA 9490mm, (FIXNÁ POLOHA)
- ㉕ KONTRAPORTÁL S3, VÝŠKA 8680mm, (FIXNÁ POLOHA)
- ㉖ KONTRAPORTÁL S4, MN = 7910mm, MAX = 10940mm, (SVETELNÁ LÁVKA - FHR 1000)
- ㉗ SVETELNÁ LÁVKA 1 (PEVNÁ 1000 w)
- ㉘ PARAPET ORCHESTRISKA (POSUVNÝ)
- ㉙ OBSLUŽNÁ LÁVKA 1
- ㉚ OBSLUŽNÁ LÁVKA 2
- ㉛ BALKÓN PRE OSVETLOVAČOV
- ㉜ PANORÁMOVÁ BATÉRIA
- ㉝ BLEDÝ HORIZONT
- ㉞ TMAVÝ HORIZONT
- ㉟ SVETELNÁ LÁVKA 2 (PEVNÁ 12000 w)
- ㊱ TYLOVÝ RÁM
- ㊲ ZVUKOVÝ PULT

## LEGENDA

- ▲ ENTERING THE POINT OF VIEW
- △ ACCESS TO THE STAGE
- ▲ ENTRANCE TO THE LODGE
- ① AUDITORIUM (UNFOCUSED)
- ② D / DP TABLES OF THE MAIN STAGE, MAX. ±0,000, MIN. ± -3,630 mm
- ③ DECORATIONS STORE
- ④
- ⑤ ORCHESTRA PIT, MAX. ±0,000, MIN. ± -2,455 mm
- ⑥
- ⑦ ELEVATOR DECORATION
- ⑧ CASSETTE 14x14 m - TURNABLE Ø12,96 m
- ⑨ SHELF CURTAIN (RED)
- ⑩ FESTIVE CURTAIN - LEAFLET NO. 1 (TAPESTRY)
- ⑪ PROSCENIUM THRUST (NOT USED III - SUSPENDED SPEAKERS)
- ⑫ LEAFLET 2-30 12, 11, 22, - TELESCOPIC EXTENSION - CROSS-SECTION 60X100 mm
- ⑬ L1, L2, L3 SLOT CEILING COVER HEIGHT 4,000mm
- ⑭ LIGHTS 1-2, DIMENSIONS HxW 1-2960X690mm, 2- 2265X625mm
- ⑮ REAR HORIZON
- ⑯ SCARVES
- ⑰ THE IRON CURTAIN
- ⑱ PORTAL TOWER 1 (LEFT, RIGHT) - (MANUAL DRIVE)
- ⑲ PORTAL TOWER 2 (LEFT, RIGHT), MN = 18525mm, MAX = 21160mm
- ㉑ PORTAL TOWER 3 (LEFT, RIGHT), MN = 15045mm, MAX = 19960mm
- ㉒ PORTAL TOWER 4 (LEFT, RIGHT), MN = 12065mm, MAX = 19000mm
- ㉓ PORTAL BLADE (FIXED POSITION) S1, VÝŠKA 10385 mm, (FIXED POSITION)
- ㉔ COUNTER PORTAL S2, HEIGHT 9490 mm, (FIXED POSITION)
- ㉕ COUNTER PORTAL S3, HEIGHT 8680mm, (FIXED POSITION)
- ㉖ COUNTER PORTAL S4, MN = 7910 mm, MAX = 10940 mm, (LIGHT FOOTBRIDGE - FHR 1000 w)
- ㉗ LIGHT FOOTBRIDGE no.1, FIRM 10000 w)
- ㉘ ORCHESTRA PARAPET (WALKING)
- ㉙ SERVICE BAY no.1
- ㉚ SERVICE BAY no.2
- ㉛ BALCONY FOR ILLUMINATORS
- ㉜ PANORAMIC BATTERY
- ㉝ PALE HORIZON
- ㉞ DARK HORIZON
- ㉟ LIGHT FOOTBRIDGE no.2 FIRM 12000 w)
- ㊱ TAIL FRAME
- ㊲ SOUND CONSOLE



## LEGENDA

- ① HEADSKO INEŽMERANĚ
- ② D/DP STOLY HLAVNĚHO JAVISKA, MAX.=±0,000, MIN.= -3,630
- ③ SKLAD DEKORACÍ
- ④ ORCHESTRISKO, MAX.=±0,000, MIN.= -2,455
- ⑤ VÝTAH DEKORACÍ
- ⑥ KAZETA TOČNĚ 1x1x1m - TOČŇA Ø12,96m
- ⑦ NŮŽNICOVÁ OPONA (ČERVENÁ)
- ⑧ SLÁVNOSTNÁ OPONA - PROSPEKTOVÝ ŤAH ě1 (GOBELIÑO)
- ⑨ PROSCĚNIOVÝ ŤAH II - IV, Ø55mm III ŤAH SA NEPOUŽÍVA - ZAVĚSENÉ REPRODUKTORY
- ⑩ PROSPEKTOVÝ ŤAH 2-30 (2, 11, 22, - MOŽNOST TELESKOPICKÉHO ROZŠÍŘENÍ) - PRIEZEV JOKLA 60x100 mm
- ⑪ L1, L2, L3 VÝKRYTÍ ŠTRBINOVÉHO STROPU (VÝŠKA 4000mm)
- ⑫ SVETELNÁ BATÉRIA 1-2, IROZMERY, VxŠ 1-2960x990mm, 2- 2265x625mm
- ⑬ ZADNÝ HORIZONT
- ⑭ ŠALY
- ⑮ ŽELEZNÁ OPONA
- ⑯ PORTÁLOVÁ VEŽA 1 (ľavá, pravá) - RUČNÝ PŮHON
- ⑰ PORTÁLOVÁ VEŽA 2 (ľavá, pravá), MN= 18525mm, MAX.= 21160mm
- ⑱ PORTÁLOVÁ VEŽA 3 (ľavá, pravá), MN= 15045mm, MAX.= 19960mm
- ⑲ PORTÁLOVÁ VEŽA 4 (ľavá, pravá), MN= 12065mm, MAX.= 19000mm
- ⑳ PORTÁLOVÁ LAMELA S1, VÝŠKA 10385mm, (FIXNÁ POLOHA)
- ㉑ KONTRAPORTÁL S2, VÝŠKA 9490mm, (FIXNÁ POLOHA)
- ㉒ KONTRAPORTÁL S3, VÝŠKA 8680mm, (FIXNÁ POLOHA)
- ㉓ KONTRAPORTÁL S4, MN= 7910mm, MAX.= 10940mm, (SVETELNÁ LÁVKA - FHR 1000)
- ㉔ SVETELNÁ LÁVKA ě1 PEVNÁ (1000 w)
- ㉕ PARAPET ORCHESTRISKA (POSUVNÝ)
- ㉖ OBSLUŽNÁ LÁVKA ě1
- ㉗ OBSLUŽNÁ LÁVKA ě2
- ㉘ BALKÓN PRE OSVETLOVAČOV
- ㉙ PANORÁMOVÁ BATÉRIA
- ㉚ BLEDÝ HORIZONT
- ㉛ TMAVÝ HORIZONT
- ㉜ SVETELNÁ LÁVKA ě2 PEVNÁ (2000 w)
- ㉝ TYLOVÝ RÁM
- ㉞ ZVUKOVÝ PULT

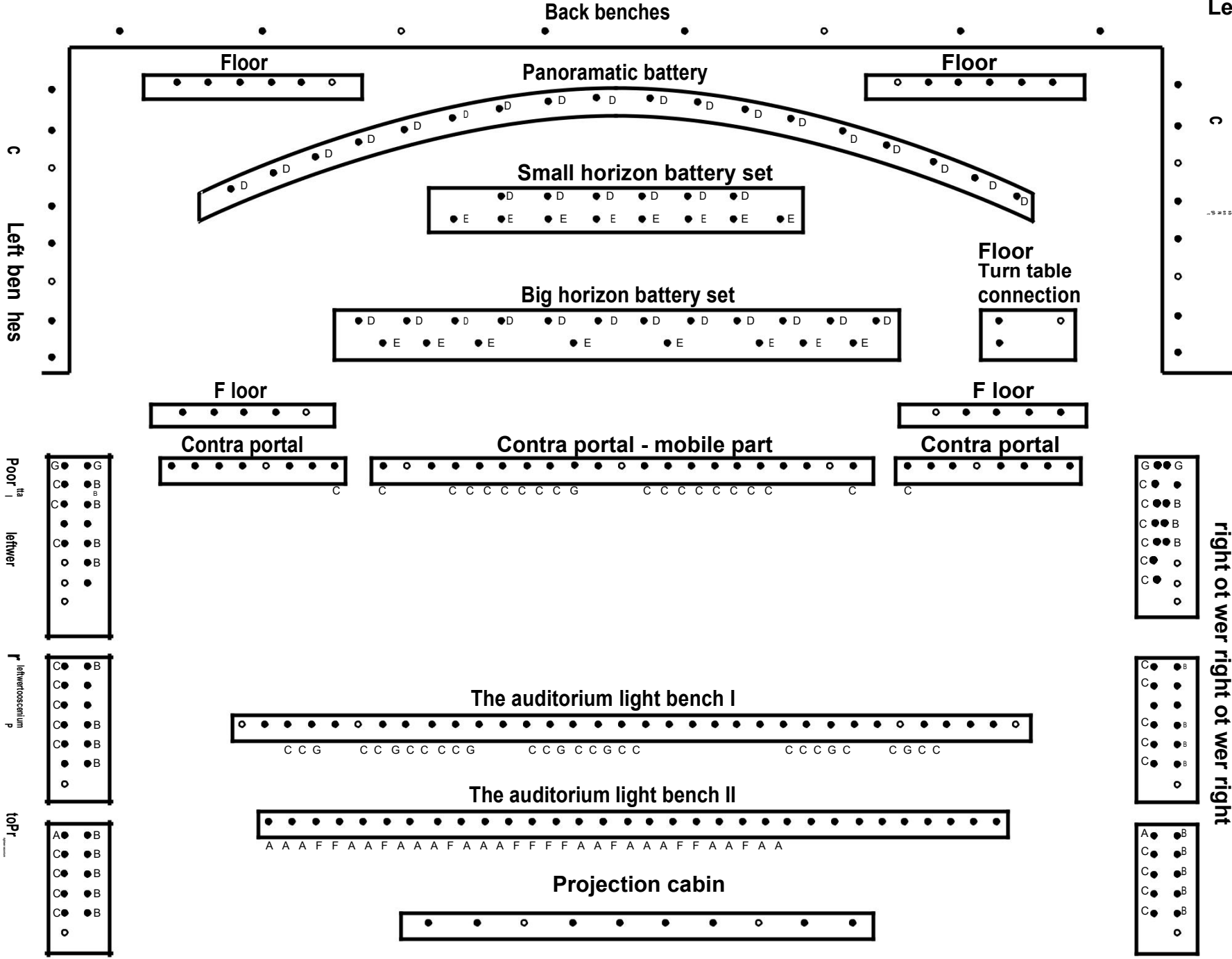
## LEGENDA

- ① AUDITORIUM (UNFOCUSED)
- ② D / DP TABLES OF THE MAIN STAGE, MAX.=±0,000, MIN.= -3,630 mm
- ③ DECORATIONS STORE
- ④ ORCHESTRA PIT, MAX.=±0,000, MIN.= -2,455 mm
- ⑤ ELEVATOR DECORATION
- ⑥ CASSETTE 1x1x1 m - TURNTABLE Ø12,96 m
- ⑦ SHELF CURTAIN (RED)
- ⑧ FESTIVE CURTAIN - LEAFLET NO. 1 (TAPESTRY)
- ⑨ PROSCENIUM THRUST (NOT USED III - SUSPENDED SPEAKERS)
- ⑩ LEAFLET 2-30 (2, 11, 22, - TELESCOPIC EXTENSION) - CROSS-SECTION 60X100 mm
- ⑪ L1, L2, L3 SLIT CEILING COVER HEIGHT (HEIGHT 4000mm)
- ⑫ LIGHTS 1-2, (DIMENSIONS HxW 1-2960X990mm, 2- 2265X625mm)
- ⑬ REAR HORIZON
- ⑭ SCARVES
- ⑮ THE IRON CURTAIN
- ⑯ PORTAL TOWER 1 (LEFT, RIGHT) - (MANUAL DRIVE)
- ⑰ PORTAL TOWER 2 (LEFT, RIGHT), MN= 18525mm, MAX.= 21160mm
- ⑱ PORTAL TOWER 3 (LEFT, RIGHT), MN= 15045mm, MAX.= 19960mm
- ⑲ PORTAL TOWER 4 (LEFT, RIGHT), MN= 12065mm, MAX.= 19000mm
- ㉑ PORTAL BLADE (FIXED POSITION) S1, VÝŠKA 10385 mm, (FIXED POSITION)
- ㉒ COUNTER PORTAL S2, HEIGHT 9490 mm, (FIXED POSITION)
- ㉓ COUNTER PORTAL S3, HEIGHT 8680MM, (FIXED POSITION)
- ㉔ COUNTER PORTAL S4, MN= 7910 mm, MAX.= 10940 mm, (LIGHT FOOTBRIDGE - FHR 1000 w)
- ㉕ LIGHT FOOTBRIDGE no 1, FIRM (1000 w)
- ㉖ ORCHESTRA PARAPET (WALKING)
- ㉗ SERVICE BAY no.1
- ㉘ SERVICE BAY no.2
- ㉙ BALCONY FOR ILLUMINATORS
- ㉚ PANORAMIC BATTERY
- ㉛ PALE HORIZON
- ㉜ DARK HORIZON
- ㉝ LIGHT FOOTBRIDGE no 2 FIRM (2000 w)
- ㉞ TAIL FRAME
- ㉟ SOUND CONSOLE

# INSTALLATION OF THE LIGHT TECHNOLOGY

**Legend:**

Symbol	Type of spotlight
A	HHR 2002
B	HHR 650
C	FHR 1000
D	AHR 1000
E	PC 1000
F	Robert Juliet SX - 714
G	WARP - 600
N	unregulated circuits



roPo  
tal t wer r P oscenium The auditorium  
right ot wer right ot wer right

roPr  
leftner  
r leftner oscenium p  
roPr

roPo  
tal t wer r P oscenium The auditorium  
right ot wer right ot wer right

## SCENIC LIGHT EQUIPMENT

## Description of the installation of the lighting technology

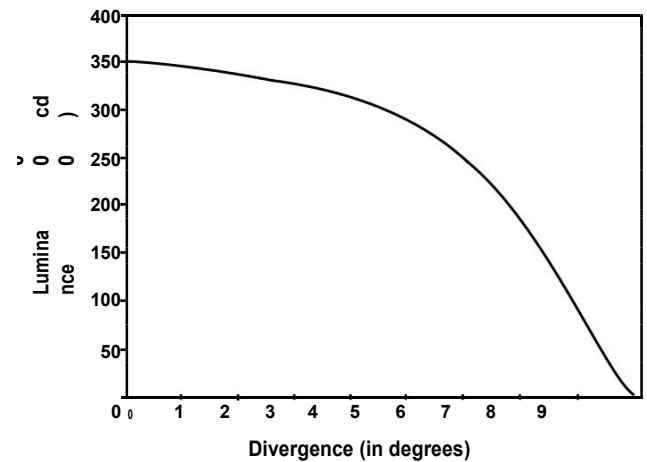
Controlling system:

- To control and manipulate the stage lights, the controlling system Strand 520
- Number of circuits – 260
- Disc drive – 3,5
- No manual
- One memory dissolve
- A possibility of time dissolving

Type of reflectors installed:**“A” HHR 2002 A 01 A**

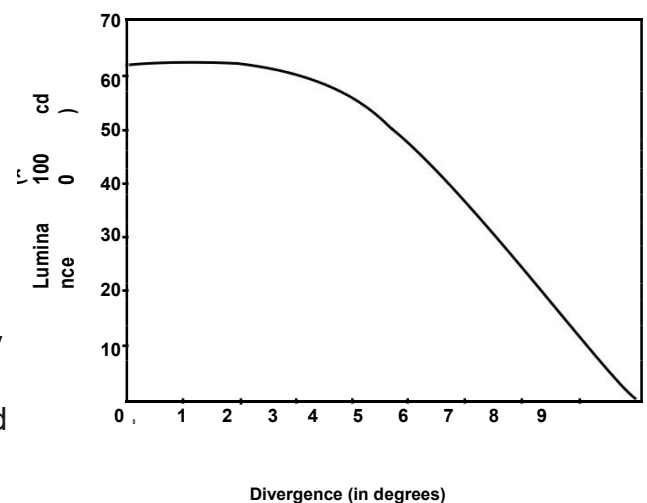
shaping reflector with the objective 18  
2000W – halogen

- Determined for lighting objects, persons, and scenes in the stage area by a sharp, directed light
- The light trace is sharply limited, softening of its edges is possible to achieve in a small extent, if the objective is not focused
- The optical system is composed of ellipsoid mirror, 2000W halogen lamp, and objective with two plano-convex lenses
- To the optical system belongs a fully closable iridescent shutter, enabling to reduce the divergence to approx. 1° and a full closing (designed for only a short closing of the light beam)

**“B” HHR 650 A 05 A**

shaping reflector divergence 18  
650W – halogen

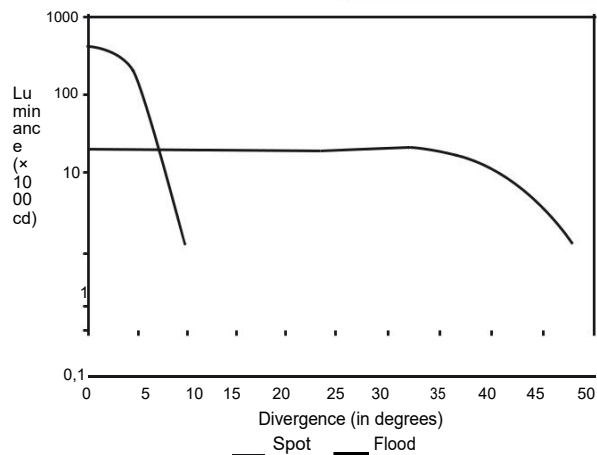
- Determined for lighting objects, persons, and scenes in the stage area by a sharp, directed light
- The light trace is limited and can be shaped by a four-part shutter
- The diameter of the light trace can be regulated by an iridescent shutter, completely closable
- Softening of the edge of the light trace can be done in a small extent by not focusing the objective, the essential scattering frame into the cassette for colour filters
- Optical system is composed of an ellipsoid mirror with a spherical contra mirror, a mixed 650W halogen lamp, and objective with two plano-convex lenses



Optical is equipped by a fully closable iridescent shutter enabling to reduce the divergence to approx. 1° with the following closing of the shutter

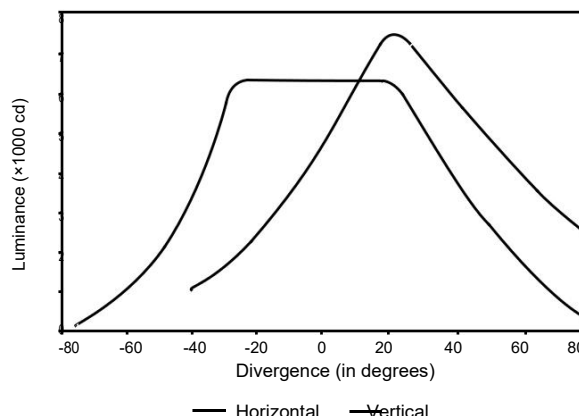
**“C” FHR 1000 A 01 A** lenticular reflector with plano-convex designed lens 1000W – halogen

- Determined for lighting objects, persons, and scenes by a focused light with a softly limited light trace, while the angle of the light beam – the divergence – can be changed from approx. 8° to 60°
- Determined for a fixed placement on portals, light benches, etc.; while in operation, the reflector is not manipulated, neither the colour filters are exchanged
- The working position of the reflector with regard to the lamp used and its cooling is +45° from the horizontal optical axis



**“D” AHR 1000 A 01 A** reflector planar asymmetrical 1000W – halogen

- Determined predominantly for lighting horizons, stage prospects, and scenes in places requiring equal, scattered light
- Cassette is fixed in front of the reflector body to place the protecting netting frame and insert colour glass filters



**“E” PC 1000** remote controlled reflector 1000W

Another types of light devices used:

- In the equipment of the light park of the DAB Nitra, besides already mentioned reflectors, the following light devices may be found:

TYPE OF THE DEVICE	NO. (IN PCS)	NOTE
Golden Scan 3 HMI 1200	4	remote controlled reflector
Masterpiece 108	1	control counter
Shadows QS – ST 1200	2	spot reflector
ADB HMI 1200	4	
Svoboda reflector	6	
PAR 1000	10	
PAR 300	12	

PRACTICAL USAGE OF THE REFLECTORS INSTALLED*THE AUDITORIUM LIGHT BENCH I*

- reflectors of the type FHR 1000 and HHR 650
- range of lights – from the half of the apron stage till approx 1m from behind the contra portal

*THE AUDITORIUM LIGHT BENCH II*

- reflectors of the type FHR 1000, HHR 650, and HHR 2002
- range of the light – till the contra portal
- a possibility to light the apron stage

*THE AUDITORIUM TOWER RIGHT – LEFT*

- reflectors of the type FHR 1000, HHR 650, and HHR 2002
- range of lights – till the opposite side of proscenium to the contra portal

*PROSCENIUM TOWER RIGHT – LEFT*

- reflectors of the type FHR 1000 and HHR 650
- range of the light – a narrow corridor of the proscenium
- reflectors located gradually one over another
- reflectors are practically not applicable, if portal towers are in their extreme position (the width of the scene – 12m)

*PORTAL TOWER RIGHT – LEFT*

- reflectors of the type FHR 1000 and HHR 650
- range of the light – the main stage
- reflectors placed gradually one over another
- if the contra portal – the mobile part – is in its bottom position (height 8m), on every tower there are 5 upper reflectors out of operation

*CONTRA PORTAL – MOBILE PART*

- reflectors of the type FHR 1000
- lights to the space of the main stage

*BIG HORIZON BATTERY SET*

- reflectors of the type PC 1000 and AHR 1000
- lights for horizons and main stage

*PANORAMATIC BATTERY*

- reflectors of the type AHR 1000
- determined for lighting the background panoramic horizon

*RIGHT, LEFT, AND BACK BENCHES*

- no reflectors installed
- in case of their installation, using it as a control light is problematic due to use of the back-ground horizon and blocking elements

Free numbers of circuits in the scheme of the light technology installation mean that no reflectors are installed there.

Due to a high current load, it is possible to turn on only a half of maximum installed reflectors.

## SCENIC SOUND EQUIPMENT

<b>Mixing table PA</b>	YAMAHA M7CL 48 CH connection with the stage 24CH multipar-XLR Adamson SpekTrix – 3x 4pcs Adamson (left, center, right - stage) Subbas: 4x PROEL 21" (2pcs left, 2pcs right) APOGEE AE9 2x Amps: 10kw
PA control from FOH (front mixer)	ADAMSON: left, right, center APOGEE: side left, right subbass: mono
Portal monitors	2x AUX (4pcs Renkus-Heinz TRX82)
Stage monitors	3x AUX (4pcs TURBOSOUND TMI 102)
Amplifier	QSC PL 2.0HV and QSC PL 1.8 3 pcs QSC USA 1300
<b>Effect rack</b>	EFF 1 ROLAND SRV 3030 EFF 2 T.C.ELEKTRONIC M-ONE XL 2 pcs equalizer JBL 31 / MONITOR EQ / MODEL JBL 5547 A 2 pcs MASTER PROCESSOR DBX DDP 2 pcs SABINE FBX 901 / MONITOR WAY /

FURTHER elektroacoustic equipment in the Andrej Bagar Theatre:

<b>Monitors</b>	6 pieces TURBOSOUND TMI 102 2 pieces TURBOSOUND TMI 105
<b>Microphones</b>	2 pieces SENNHEISER ME 64 / cond. cardio / 3 pieces SENNHEISER ME 66 / cond. hypercardio / 5 pieces SENNHEISER MR 431 / dyn. hypercardio / 1 piece SENNHEISER MD 441 / dyn. hypercardio / 5 pieces AKG D 321 / dyn. hypercardio / 1 piece AKG CK 611 ULS / cond. cardio /
<b>Microports</b>	12 pieces SENNHEISER SK 50 – VHF 2 pieces hands SKM 5000 – VHF / cond. hypercardio /
<b>Loudspeakers</b>	1 piece DAT FOSTEX D – 10 3 pieces CD PLAYER Technics SL – PG 460 A 1 piece CD PLAYER SL – PS 670 A 2 pieces CD PLAYER SL PS 770 1 piece TAPE DECK Technics RS – BX 601 1 piece DOUBLE TAPE DECK Technics RS – TR 474 2 pieces MD SONY MDS JB 940 2 pieces MD SONY MDS JB 920 1 piece MD SONY MDS JE 520



**DIVADLO**

**ANDREJA**

**BAGARA**

**V NITRE**

**Spracovateľ**

V-ings, s.r.o., Tolstého 7, 811 06 Bratislava



**Projektanti**

Ing. Pavel Vnuk, Vlárská 10, 831 01 Bratislava

Ing. Martina Štefanovičová, Poštová 60, 900 24 Veľký Biel

Bratislava 2018